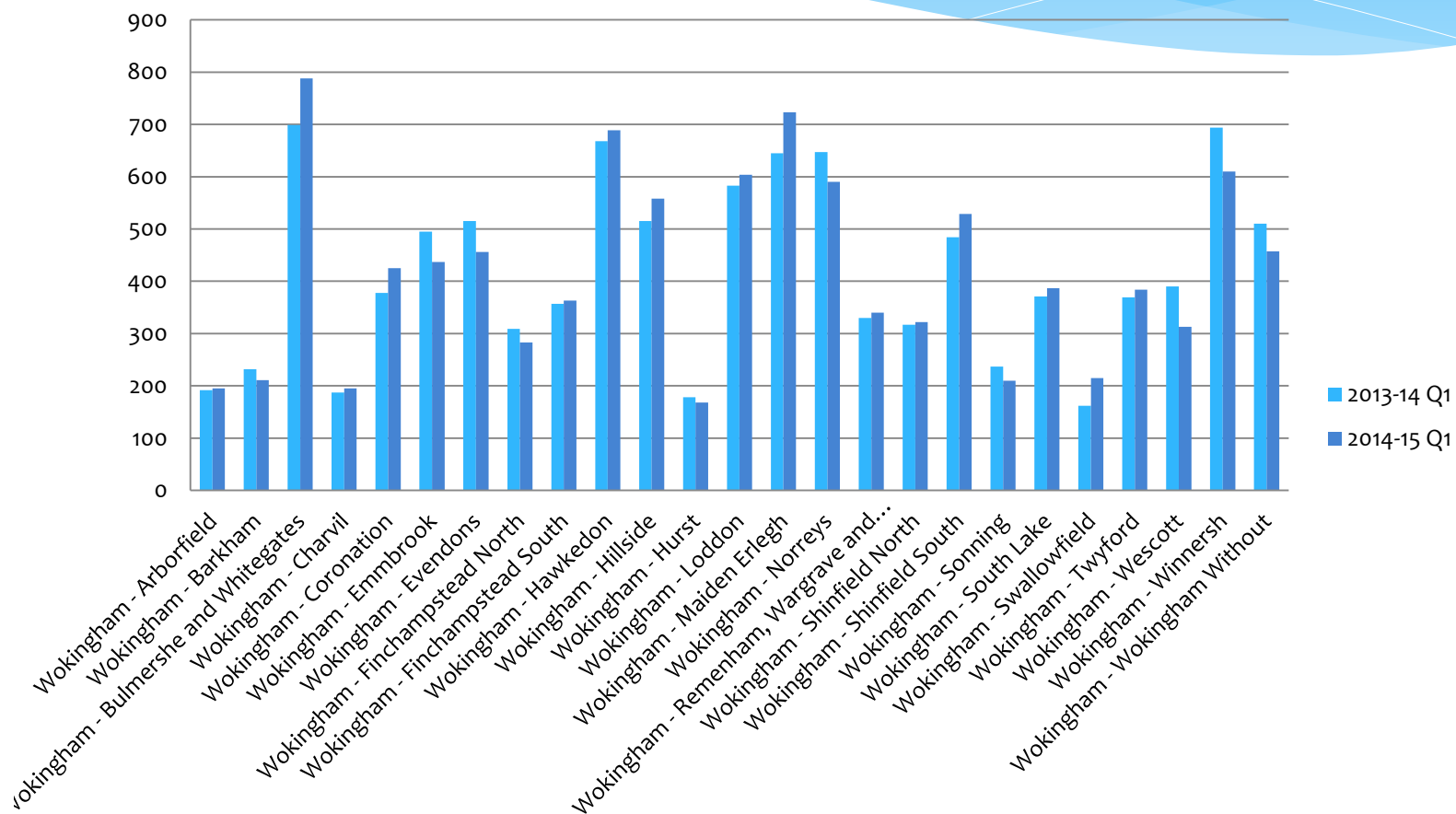


ED analysis and Operational Resilience and Capacity Planning 2014-15

Debbie Milligan

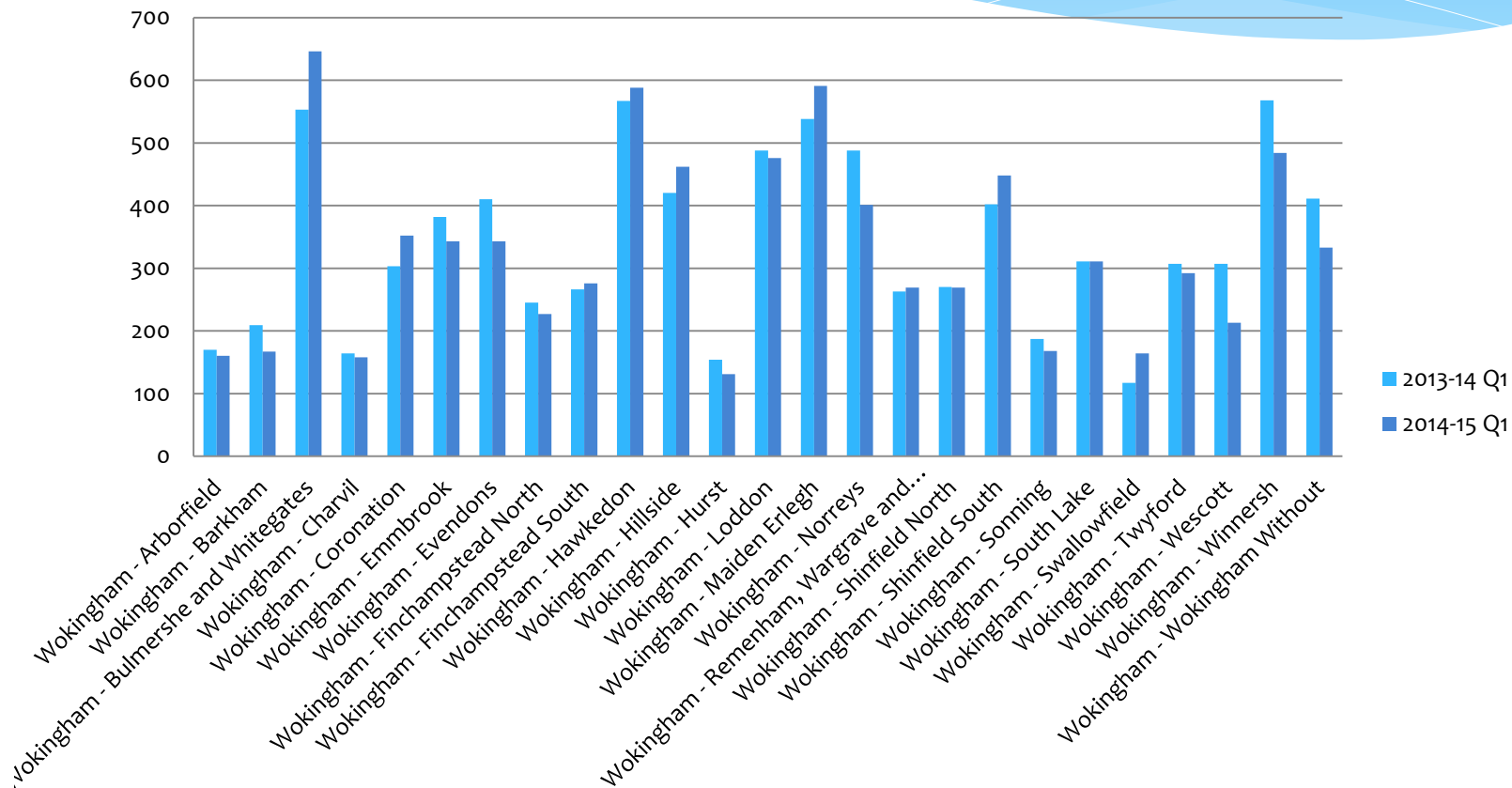
Attendances at ED by Ward

All patients



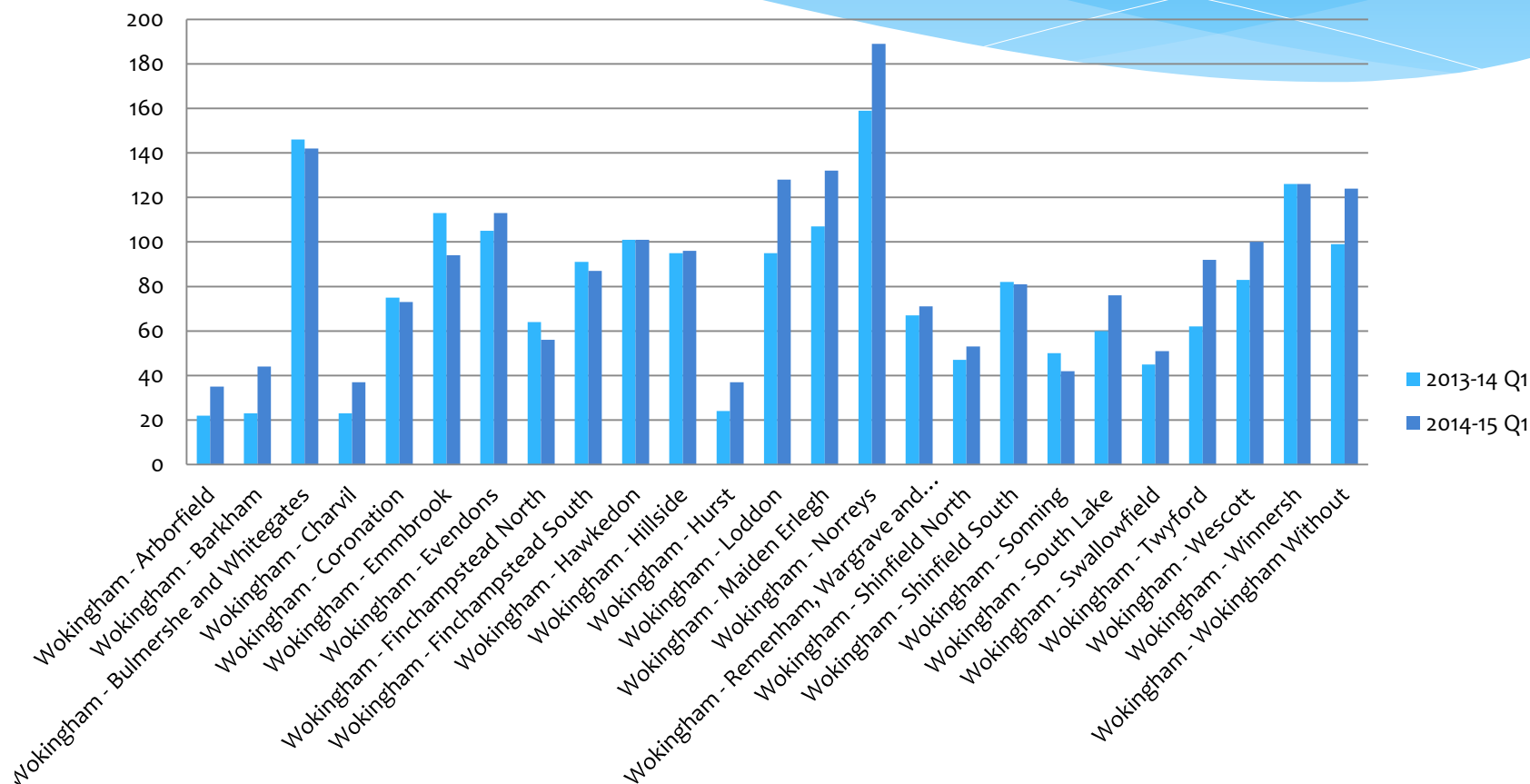
Attendances at ED by Ward

Self presenting only

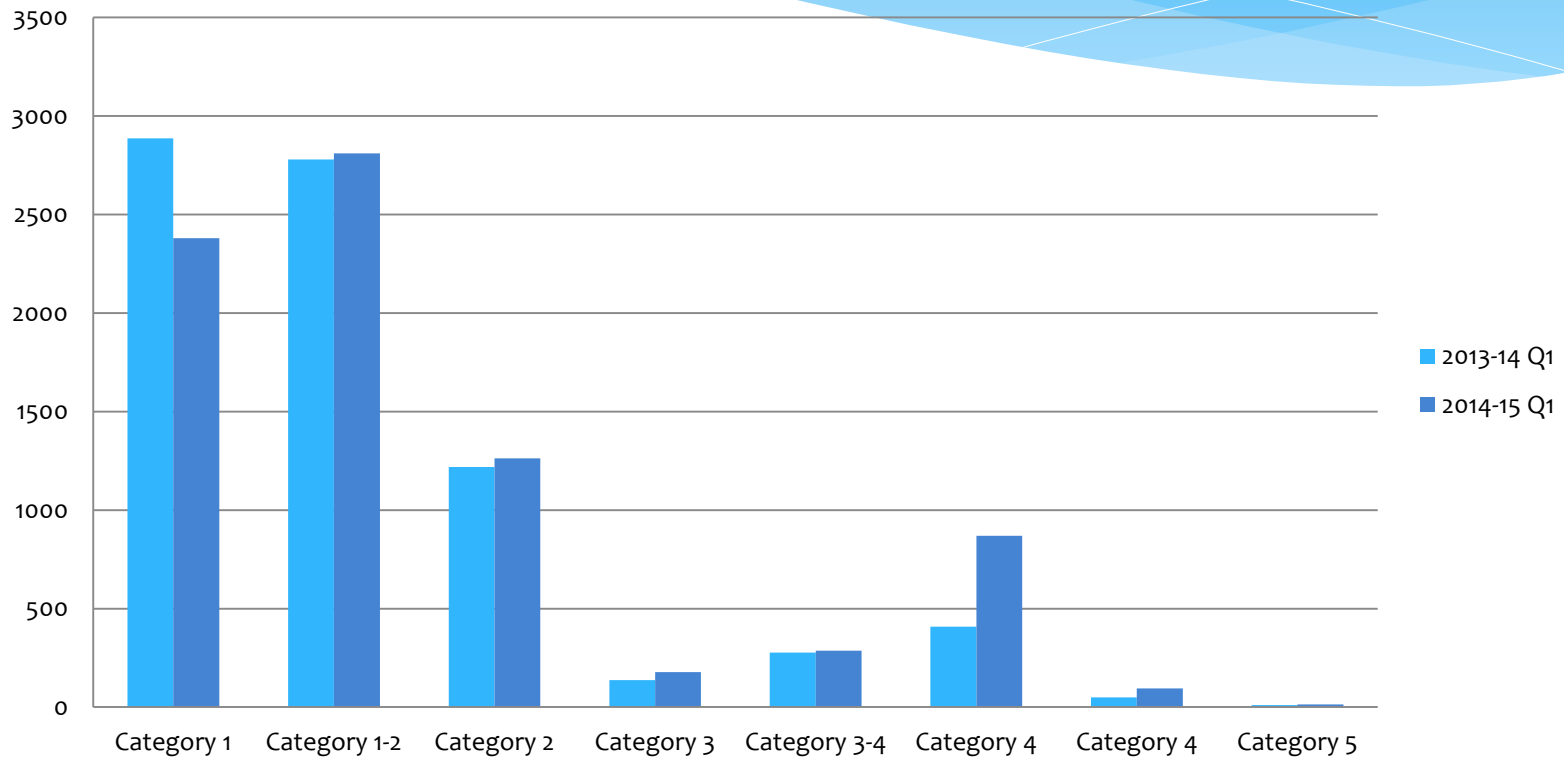


Attendances at ED by Ward

Ambulance arrivals only

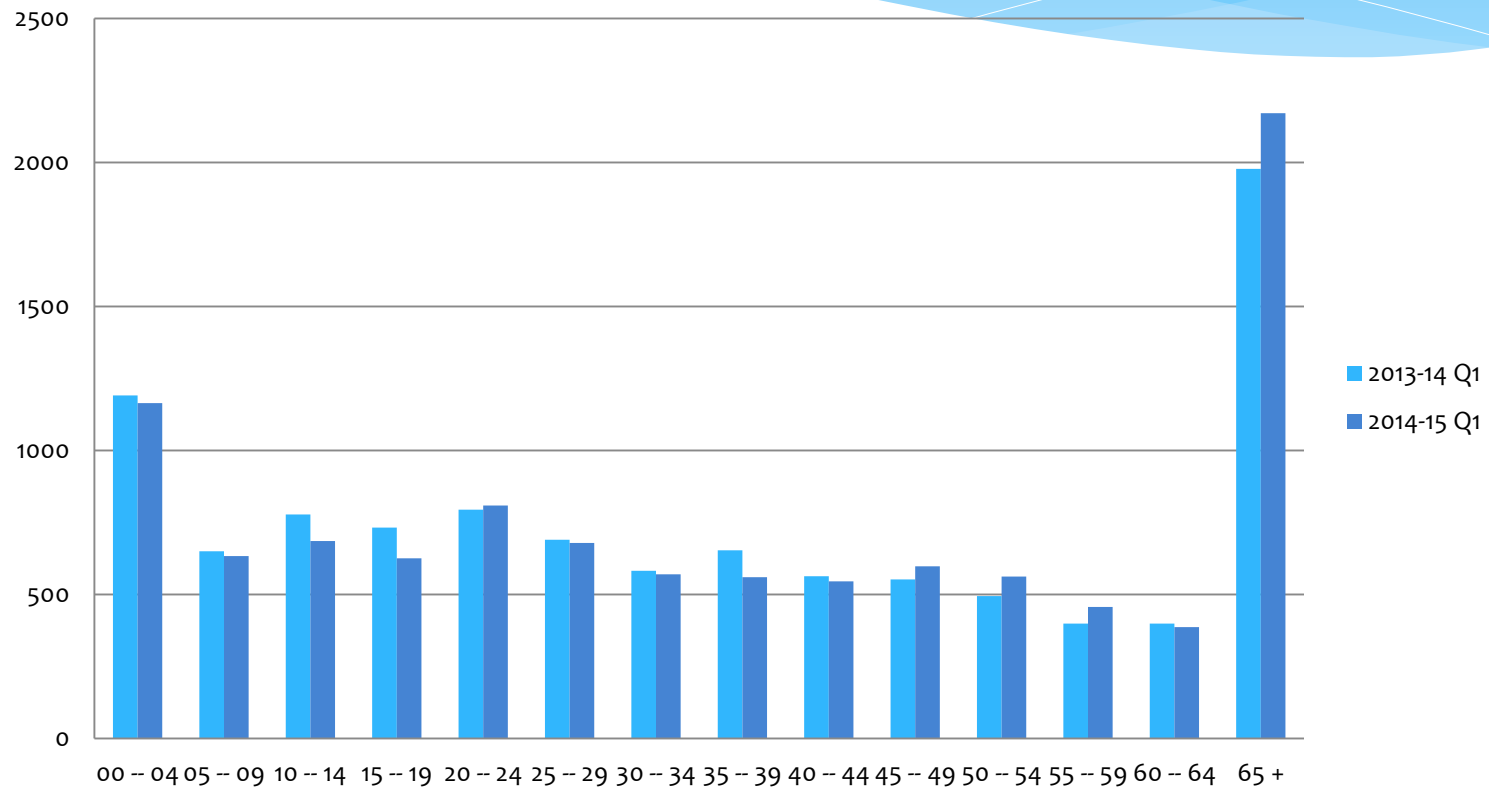


Attendance at ED by category

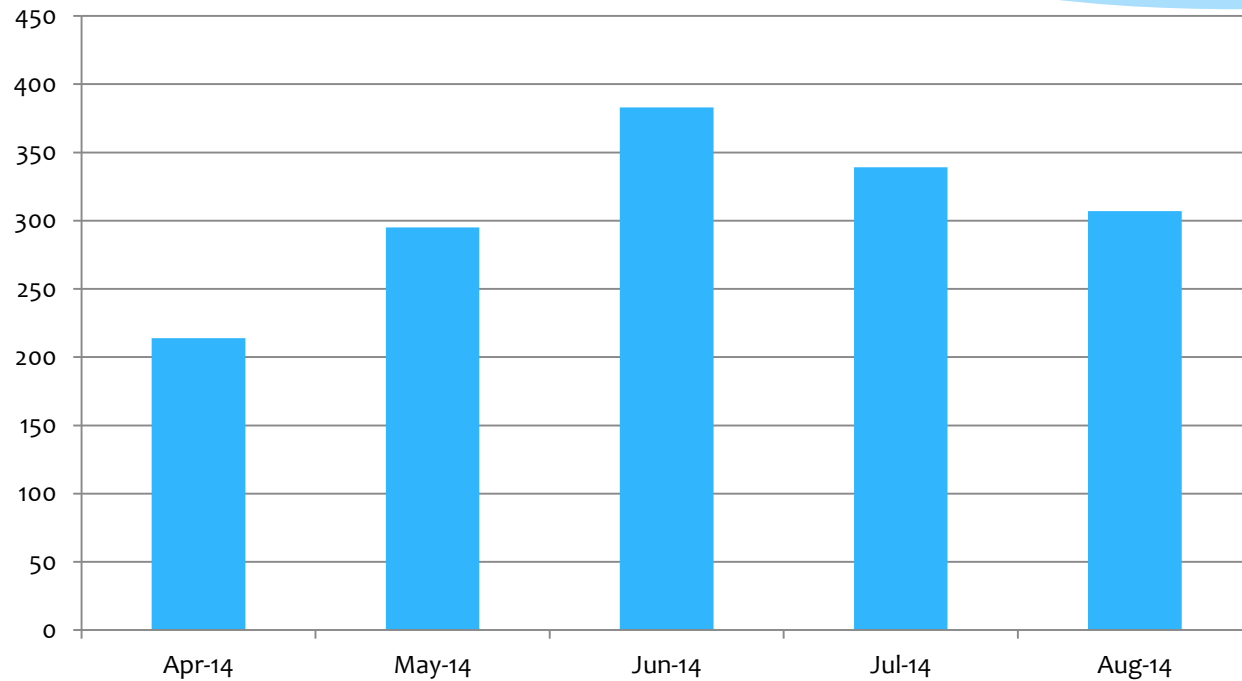


Category 1 least complex – Category 5 most complex

Attendances at ED by Age Band



Wokingham attendances at Bracknell Urgent Care Centre



Operational Resilience and Capacity Planning

National Context

- * Year round system resilience across non elective and elective care
- * Robust planning for seasonal pressures
- * Release of national monies for winter initiatives dependent on sign off of plan by NHSE, TDA and Monitor
- * Progress against plans reported to NHSE on a monthly basis
- * Achievement of ED 4 hour standard seen as national priority

Berkshire West ORCP

- * Whole system plan
 - * CCGs/RBFT/BHFT/SCAS/Borough Councils
- * Formally signed off on 8 October 2014
- * National monies released
 - * Tranche 1: £2.6m
 - * Tranche 2: £1.09m
- * Schemes for investment agreed by Urgent Care Programme Board
- * Each scheme to have KPIs tracked and reported nationally and to Programme Board

Wokingham ORCP Initiatives

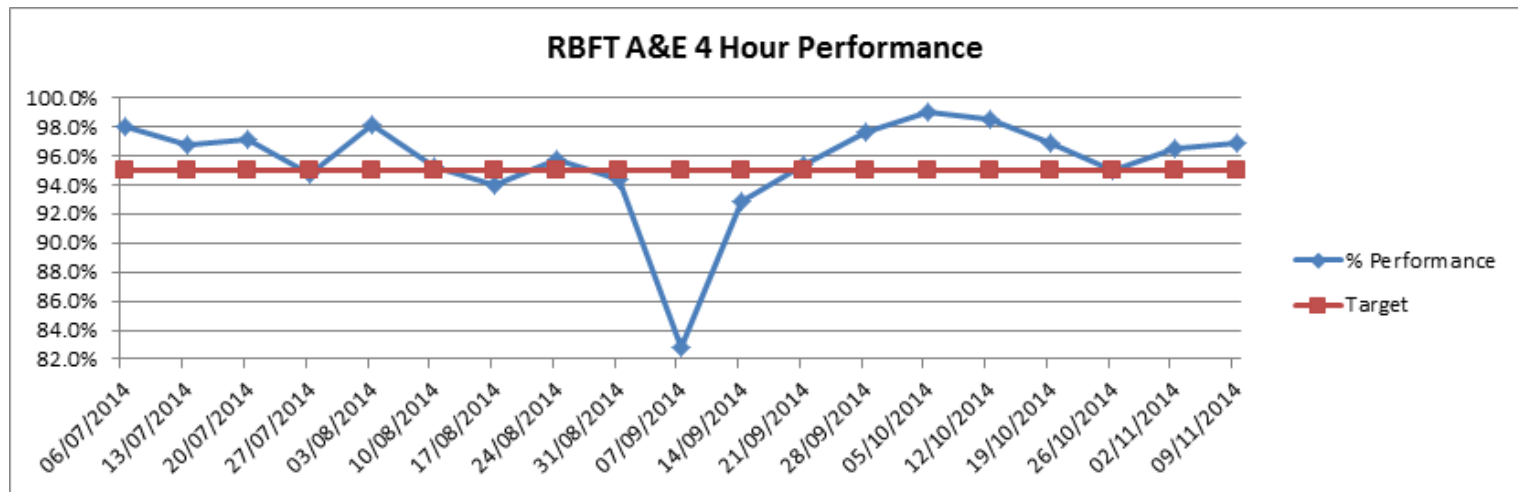
Scheme	Cost, £k
Additional OT capacity in Intermediate Care	15
Additional OT capacity in Health Liaison Team	38.480
Trusted Assessor training	12
Telecare/telehealth	25

Anticipated outcomes:

- Reduction in average length of stay on the Fit to Go list
- Increased number of week-end discharges from hospital
- Reduction in waiting time for assessments
- Increased number of people with telecare monitoring

ED 4 hour performance

Latest position



Questions?